

# Instructions for using the PATHÉSCOPE FILM MENDER. (British Made)

## To Repair a Torn Perforation.

Open the clamping Plate 3 of the Mender as shown in Fig. 1. Place the film on pin 1, shiny side uppermost, the torn perforation being placed over the pin. Hold a Film Patch with a pair of tweezers and then apply a small drop of Patheine Film Cement to the perforation to be repaired. Quickly place the patch on Pin 1, pull down clamping plate 3 and secure by spring catch 4. Leave locked for 15 seconds.

## To Join a Broken Film.

The two ends to be joined should be cut straight across to within  $1/16$ " of the centre of the perforation. Place one end of film on Pin 2 (fig. 1) with emulsion or dull side uppermost and pull down Clamping Plate 3 (fig. 1) so that it is held by catch 4. The edge of the film should line up with the edge of Platform 5. It will be noticed that the film protrudes from the side of the Clamping Plate, and the emulsion should be moistened and scraped from this small section with a knife or similar instrument.

When this has been done, release Clamping Plate by slightly depressing Catch 4, and remove film. Place the other end of broken film on Pin 1 with shiny side uppermost and press well into the film channel (6) to ensure correct alignment. Then place cleaned film on Pin 1, shiny side uppermost, in a reverse direction, at the same time pressing film into channel as with the other section.

The end of film from which the emulsion has been cleaned should be raised slightly from Pin 1 and a small quantity of Patheine Film Cement applied evenly to both ends of overlapping join. As soon as this is done, lower film on Pin 1 and pull down Clamping Plate 3, and secure by catch 4. Leave locked for 15 seconds. (fig. 111)

To release the film, release Clamping Plate as before, and with both hands gently ease film from guideways and Pin 1. Do not attempt to remove film from one side only as the pin fits the perforation so exactly that any side or uneven pressure may result in a damaged perforation.

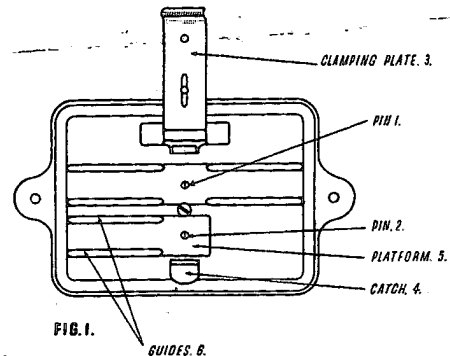


FIG. 1.

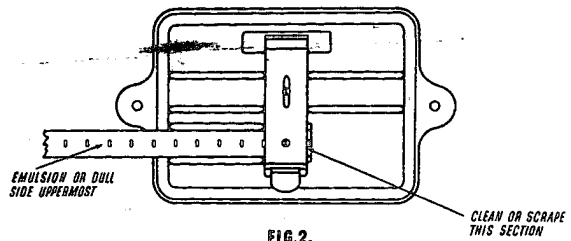


FIG. 2.

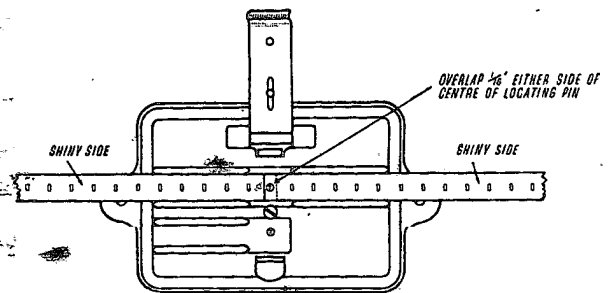


FIG. 3.

Issued by

## PATHÉSCOPE LTD.

NORTH CIRCULAR ROAD, LONDON, N.W.2